

# Design and Implementation of a Single Phase SPWM Inverter Based Microcontroller for Wind Energy Conversion Systems

Abdel-Salam Shaaban , Jean Thomas, and Ramadan Mostafa

*Automatic Control Department, FIE, Beni-suef University, Egypt.  
{abdo\_bayoda & jhh\_thomas & r\_mostafa05}@yahoo.com*

*Abstract* — The designed inverter in this paper describes is working by sinusoidal pulse width modulation technique for small wind generation. SPWM technique is used as a switching pulse for turning on and off MOSFET's/IGBT's to generate an alternating current waveform at the output of an inverter circuit. This inverter based PIC18f4431 microcontroller that use to induce a true sine waveform for conformity with loads. The use of this microcontroller yields enhanced operations, fewer system components, lower system cost and increased efficiency. The designed inverter is examined in practice on many AC loads and is necessarily concentrated upon low power electronic applications like a lamps and a fan etc. the enhanced model can improve the inverter output waveform and reduce a total harmonic distortion in remarkable way. The finished design is simulated in Proteus and Simulink software to ensure output results which is verified in the laboratory.

*Index Terms*—WECS, THD, AC, DC, PIC Microcontroller, SPWM, SIMULINK.

## I. INTRODUCTION

The utilization of the wind energy has a very long tradition. Some turbine studied the grid linkage issue of AC to DC to AC inverter interconnection the wind energy conversion systems WECS. Generality trendy turbine inverters are enforced a commutative pulse width modulation inverters to lets a constant voltage and a constant frequency output with a high-quality power. Both voltage source voltage controlled inverters and voltage source current controlled inverters are used in wind turbines [1]. Converting the Direct current DC to an alternating current AC this process are known as inverters. Inverters position are change a DC input voltage to an AC output voltage of required magnitude and frequency. Inverter output could be constant or adjustable voltage at a specific or adjustable frequency. The adjustable output voltage can be get it by modifying the input DC voltage and keeping the gain of the inverter fixed. Otherwise if the DC input voltage is fixed and is not controllable, a variable output voltage can be get it by changing the gain of the inverter, which can be completed by a pulse width modulation PWM control inside the inverter. The gain of inverter may be known as the ratio of the AC out-

put voltage to DC input voltage [13]. The SPWM is a powerful technique. It's mainly widely used in power electronics applications such as a motor driver, UPS, and renewable energy systems [2]. Usually the inverters witch employ PWM switching techniques have a DC input voltage which is mostly fixed value. There are several different ways to implement the pulse width modulation to shape the output to be AC power. A common method is a sinusoidal pulse width modulation SPWM will be described. To introduce output as a sinusoidal waveform at an exact frequency a sinusoidal control signal at the specific frequency is compared with a triangular waveform [3]. The aim of this design is to take the place of the conventional method using PIC microcontroller which is able to store instructions that generate the required pulse width modulation waveform owing to the internal PWM module. This module has a variable frequency pulse width modulation signal which controlled of the consumed voltage on the gate drive by the PIC18F4431 microcontroller. Microcontroller technology evaluation has made it possible to perform functions that were earlier done by analog electronic components. With multifunctional approach, microcontrollers today are able to accomplish functions like comparator, analog to digital conversion (ADC), setting input/output (I/O), counters/timer, among others replacing dedicated analog components for all given tasks, extremely reduction the number of components in circuit and thus, lowering the cost of components. The flash programming /reprogramming of the microcontrollers make it very flexible. Uses of microcontrollers in WECS particularly grid connected to perform varied functions and tasks from the instrumentation for sensing current, sensing voltage and frequency of power transferred to the grid to optimizing the output power by sensing proper wind speed for turning OFF/ON the system [2]. Due to varying nature of wind, the proposed design should be able to operate under different wind speed conditions, while keeping an optimum power supply, keeping fixed frequency and voltage. The designed inverter must be able to work with 500W Wind Turbine and AC supply 240V single phase for a household use and also adequate to be transferred to grid. The total harmonic distortion (THD) that measured also must be

less than 5 %. Figure 1 shows Wind energy conversion system [11].

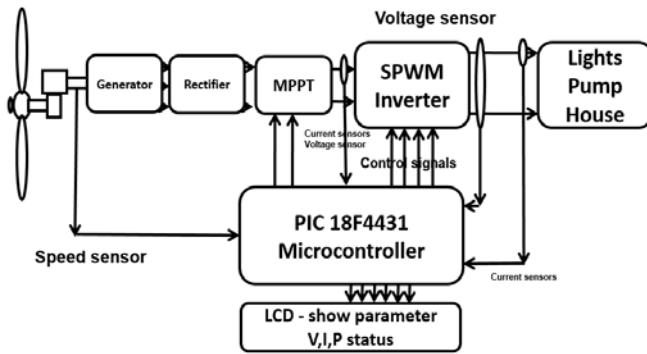


Figure1 wind energy conversion system

## II. PROBLEM STATEMENT

The inverter is the most important device to utilize the renewable energy sources efficiently. The sinusoidal pulse width modulation technique is one of the most popular PWM techniques for harmonic reduction of inverters [12]. The electronic appliances that powered by the inverter will be influenced by the harmonic contents. Those harmonics in the inverter output rely on the pulses numbers per cycle. A lot of researches concluded the output waves are not similar.

In observing the losses problem and the pulses numbers per cycle have relations. The use of high switching approach will contribute to the high power losses. The next factors should be considered during the design.

- i. The materials cost.
- ii. The filter size.
- iii. The losses of MOSFET's/IGBT's.
- iv. The harmonics of the output waveform.

## III. METHADODOGY

The system uses PIC 18F4431 microcontroller to generate Sinusoidal Pulse Width Modulation SPWM, the technique used to produce nearly true sine wave output from DC input. Pulse Width Modulation is the process of different the width of pulses to control the output voltage of inverter. In SPWM, the width of each pulse of a pulse train is varied in proportion to the amplitude of a sine wave evaluated at the center of the same pulse. The distortion factor and lower order harmonics are reduced significantly. The gating signals are generated by comparing a sinusoidal reference signal with a triangular carrier wave of frequency  $F_c$ . The frequency of reference signal  $F_r$ , determines the inverter output frequency and its peak amplitude, controls the modulation index ( $m$ ), and  $V_{rms}$  output voltage  $V_o$ . The number of pulses per half cycle depends on carrier frequency. The sine wave is considered as reference signal, while a triangular wave is treated as the carrier wave.

The frequency of reference signal determines the inverter output frequency, and its peak amplitude controls the modulation index. The idea is to change the output state at the intersecting point of the two waves [5]. Fig. 2 shows SPWM generation in above mentioned method.

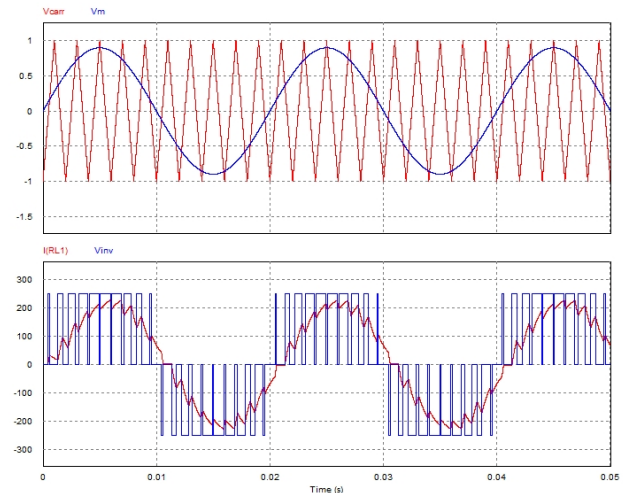


Figure2 SPWM Generation

## IV. THE SYSTEM AND CHARACTERIZATION OF THE PROPOSED DESIGN

The basic circuit diagram of the PIC controlled single phase inverter draw using MATLAB/SIMULINK is shown in Figure 3. The system comprises of a control circuit and power switches in standard H-bridge circuit, switches G1, G2, G3 and G4 are arranged in regulation to invert DC power to AC power at the required level and frequency.

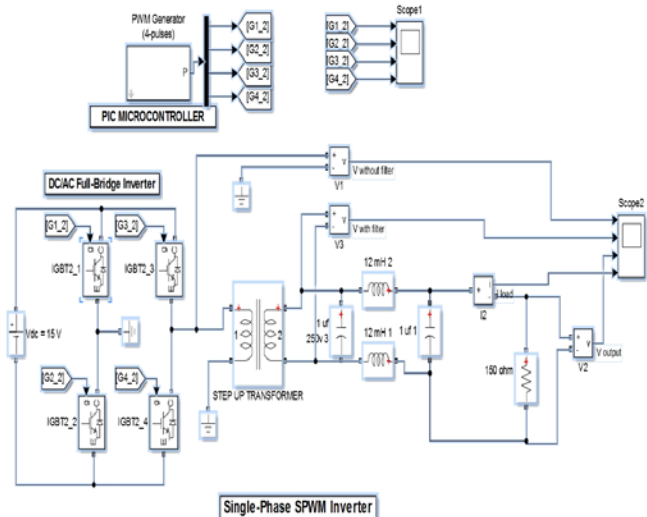


Figure 3 Schematic Diagram of the System

The control circuit section is comprises of PIC board, MOSFET driver. 8-bit PIC18F4431 microcontroller has 40-pin Low Power Microcontroller, 16 Kbytes Flash Program Memory, 256 bytes EEPROM Data Memory, 768 bytes SRAM Data Memory, 36 input output I/O Pins, One 8-bit and Three 16-Bit Timers, 10-bit Nine Channels A/D Converter, 14-bit up to Four Channels Power Control PWM. The peri-

pheral interface controllers (PICs) are the integrated circuits based on CMOS technology [15]. The main components of a PIC are input/output (I/O) pins RAM, EPROM and EEPROM. These components are combined in the same integrated circuit to reduce the size, the cost of the system and make design of the system easier. The address bus, the data bus and the control bus connecting the components are placed in the PIC circuit by the manufacturer. Due to of these advantages, PICs have been preferred devices in practical control applications. The microcontroller has been programmed to generate SPWM for gate pulses by comparing a triangular carrier wave in this work 20000Hz and a sinusoidal reference wave in 50Hz and modulation index (m) variable from 0.5 to1.00. The output voltage of full H-bridge called fundamental voltage can be determined by the equation (1)

$$V = m \times \text{Error! Bookmark not defined. Error! Bookmark not defined. } V_{dc} (V_{\text{peak}}) \quad (1)$$

The sine wave of desired frequency is generated from the stored look up table. There is optical isolation between the controller and power circuit. The power circuit topology chosen is a full H-bridge Inverter because it is capable of delivering high current at low voltage. Figure 3 shows the full bridge inverter topology. It consists of DC voltage source, four switching elements MOSFETs, LC filter and load. The LC filter is desired to preparing the signal sinusoidal in physical. To enhancement the quality of waveform by connecting an LC filter at the output of the SPWM inverter circuit. For design an LC filter, there are several methods available. The efficient performance can be get it by using Steinke, (1999) studies in simulation and experimental. A rule of thumb in control theory is that the frequencies of such a configuration have to have at least a factor of 10 between them to decouple the effects. According to this rule, for 50 Hz fundamental frequency, resonance frequency has to be at least 500 Hz. Resonance frequencies is determined by the product of L and C. The resonant frequency of the combination can be determined from the equation (2)

$$F = 1/2\pi \text{Error! Bookmark not defined. Error! Bookmark not defined. } \sqrt{LC} \quad (2)$$

## V. SOFTWARE ALGORITHM

PWM signal. In this flow chart "Initialize the program variables, Vref, lookup-table and PWM module" and initializes the ports in software by which the ports work as output ports. Then "Initialize Sine Look up Table" stores the sampling value of sine wave. Those sampling value will go in PWM duty cycle register of PWM module. Then the signal becomes Sinusoidal PWM signal.

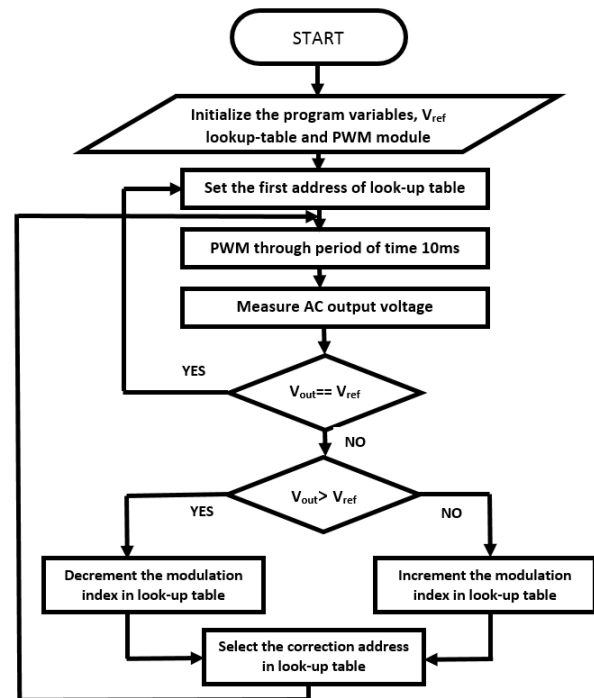


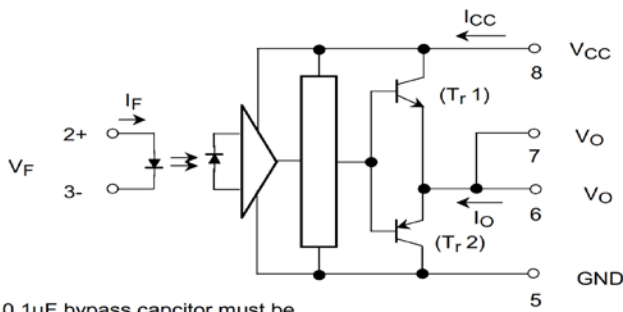
Figure 4 the flow chart for programming the signal phase inverter SPWM

The Pseudo code contains the following steps:

- 1- Initialize the program variables, Vref lookup-table and PWM module
- 2- Setting the address of the look up table.
- 3- Calculating the PWM modulation index.
- 4- Measuring the amplitude of the output voltage.
- 5- If there is equality between the output voltage and reference voltage, then returns to step 2.
- 6- If the output voltage is more than the reference voltage, then the address of the look up table is incremented and returns to step 3.
- 7- If the output voltage is less than the reference voltage, then the address in the look up table is decremented and returns to step 3.

## VI. GATE DRIVER

The MOSFETs driver TLP250 has one channel, 5000Vrms isolation voltage, 1.5A maximum continuous output current 20mA forward current, 1.6V forward voltage, 5V reverse voltage and operating supply voltage from 10V to 35V. TLP250 consists of a light emitting diode and an integrated photo detector. The output waveform will have the same waveform as the input waveform except the magnitude and power. TLP250 ICs are commonly used driver ICs for IGBTs or MOSFETs. The gate driver circuit is shown in Figure 5.



A 0.1 μF bypass capacitor must be connected between pin 8 and 5

Figure 5 TLP250 gat driver

The input forward voltage will typically be between 1.6 V and 1.8 V. The propagation delay time will typically be between 0.15 μs and 0.5 μs and the maximum operating frequency is to be 25 kHz in datasheet. When designing circuits with TLP250 a 100nf bypass capacitor (ceramic capacitor) is in the output of the driver. This capacitor is called a boot strap capacitor, used to protect the driver from dv/dt.

VII. RESULTS AND DISCUSSION

The H-bridge circuit diagram of the inverter with the drive circuit is shown in Figure 6. In this portion the design of the hardware configuration. The H-bridge inverter is composed of four IRF3205 MOSFET switches rated 55V, 110A and four anti-parallel diodes in simulation circuit. This switch has ultra-low resistance 8 mΩ, leading to power dissipation and greater efficiency. The difficult thing is directly connect interface an MOSFET to PIC18f4431 microcontroller. For proper operation of MOSFETs, voltage and current levels of PIC microcontroller output signals failure to operate the MOSFETs (Q1, Q2, Q3, and Q4). TLP250 MOSFET driver circuit used to amplify PIC output signals to the required level for operating the MOSFETs and isolates the PIC microcontroller from the power circuit. The isolation circuit is used to isolate signals for protection and safety between control circuit and power circuit. This is done by using high speed TLP250.

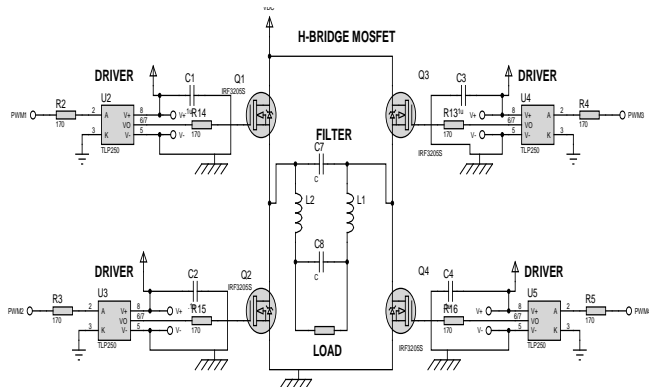


Figure 6 Proteus schematic of full H-Bridge with Tlp250

The practical setup is composed of PIC 18F4431 board, DMM, Tlp250 MOSFET driver circuit; full bridge inverter circuit (four mosfet's irf3205), DC power supply, LC filter and

oscilloscope are used to measure the experimental results as shown in Figure 7. The proposed system is designed to provide a 50-Hz sinusoidal waveform on the load. The PWM is switching frequency of 20 kHz. As 400 PWM samples complete a sine wave 360°, the frequency of the resulting sine wave will be,  $F = 20 \text{ kHz}/400 = 20000 \text{ Hz}/400 = 50 \text{ Hz}$ . The lookup table values can be calculations from equation (3)

$$Y_i = \text{PWM}_{\text{max}} \times \sin(i \times 180/200) \quad (3)$$

Where PWM=0-1023, (PWMmax=1024)  $i = 0, 1, 2, \dots, 200$

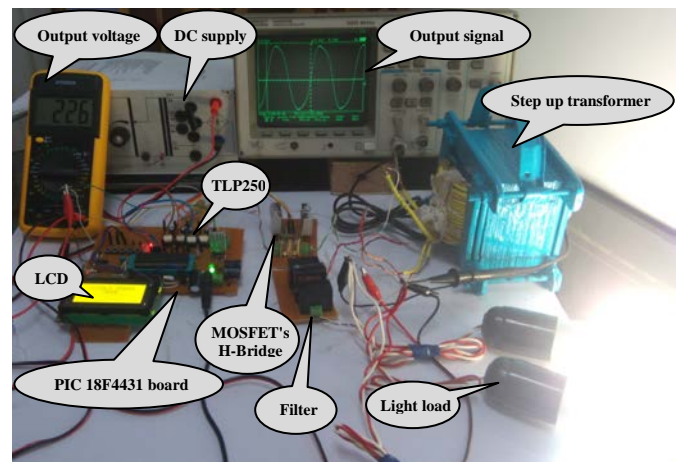


Figure 7 hardware setup of the sine wave inverter with load

The gate pulses generated for the inverter are shown in Figure 8. The simulations and the experimental results of output control circuit have been done using SIMULINK and Proteus software to investigate the validity of the switching technique strategy. In this figure two pulses of unipolar sinusoidal pulse width modulation and two square pulses are generated by the control circuit. The pulses signals are then fed to the MOSFETs connected in full bridge configuration. The two switches MOSFET Q3 and MOSFET Q4 are operated by at frequency 50 Hz which is 180 degree phase shifted by to each other and the switches MOSFET Q1 and MOSFET Q2 are operated by unipolar sinusoidal pulse width modulated signals SPWM1 and SPWM2 which has 20000 HZ and the difference is only SPWM1 signal leading SPWM2 by 180o degree phase shifted by to each other or half cycle.

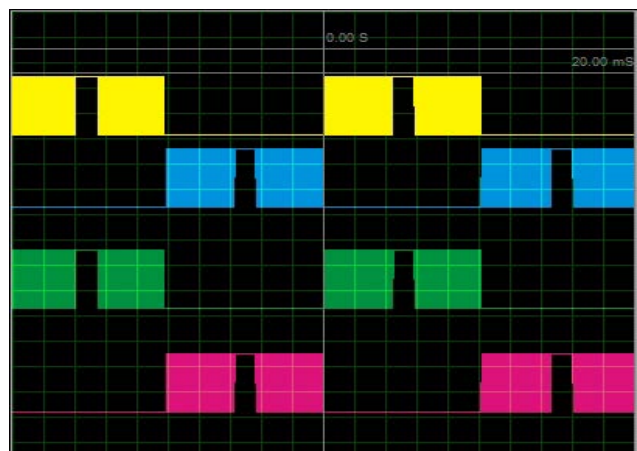


Figure 8 (a) Gate pulses simulation in proteus

Every half cycle takes 10ms. Figure 9 shows the simulation (a) in proteus, (b) in Simulink and the experimental results (c).



Figure 8(b) Gate pulses simulation in Simulink

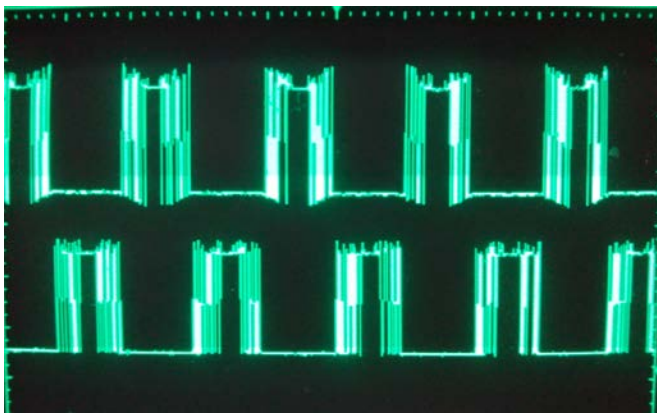


Figure 8 (c) Gate pulses in experimental

Fig. 8 Gate pulses for inverter (a), (b), (c) simulation and experimental.

In the experimental part (c) SPWM1 shows the gate pulse unipolar sinusoidal pulse width modulation which is given to switch SQ1, SPWM4 shows the square pulse which is given to switch SQ4, SPWM2 shows the gate pulse which is given to switch SQ2 and SPWM3 shows the square pulse which is given to switch SQ3.

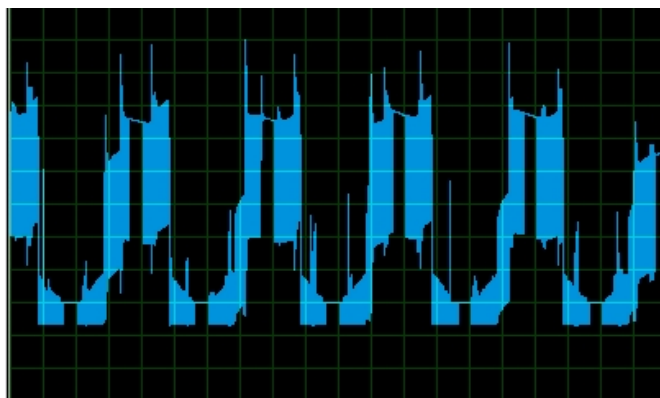


Figure 9 (a) Output before filter in proteus

Figure 9 shows the experimental and simulation results of output waveform before filter of the inverter. The output voltage is a periodic waveform which isn't sinusoidal wave but to access a required output AC sinusoidal wave signal by added the LC filter in output of the circuit. The reference wave am-

plitude adjusts the amplitude of the generated AC voltage and the Reference wave frequency determines the frequency of the generated AC voltage. The frequency of the output wave from of the simulation and the experimental results is 50 Hz. This frequency is exactly equal to grid frequency [6][7].

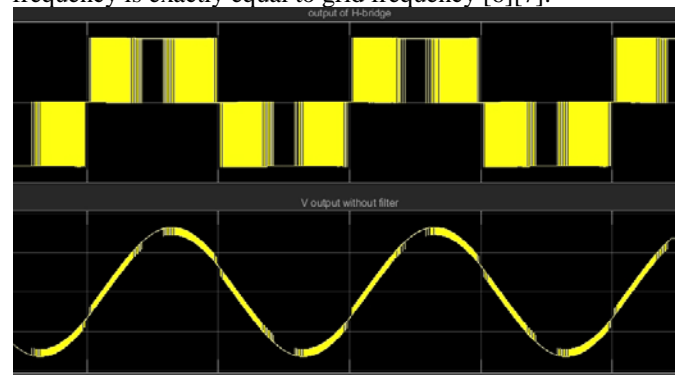


Figure 9 (b) Output before filter in Simulink

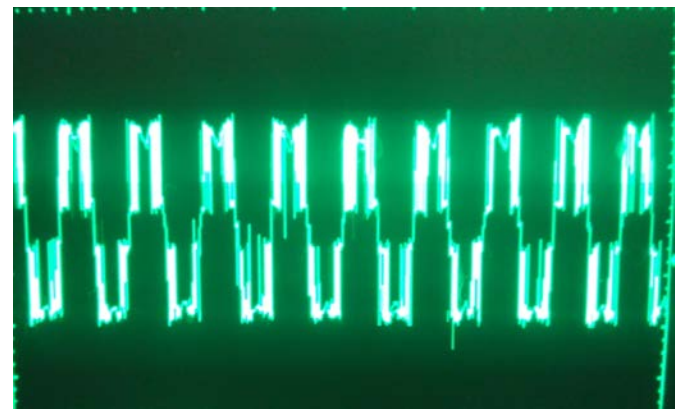


Figure 9 (c) Output before filter in experimental

Fig.9 Inverter output voltage waveform before filter (a) simulation in proteus, (b) simulation in Simulink, (c) experimental

The output sine waveform of the full H-bridge single phase inverter and the simulation results of output waveforms after filter of the inverter to ensure the output waveform results a nearly pure sine wave is practically verified. Figure 10 shows the results of SIMULINK, simulation and Proteus software.

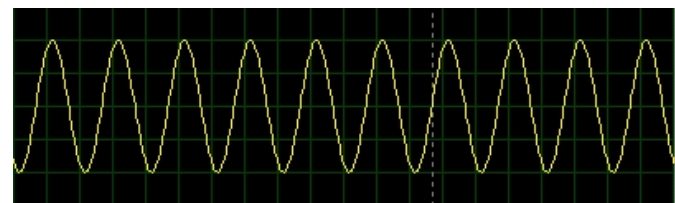


Figure 10 (a) Output after filter in proteus



Figure 10 (b) Output after filter in SIMULINK

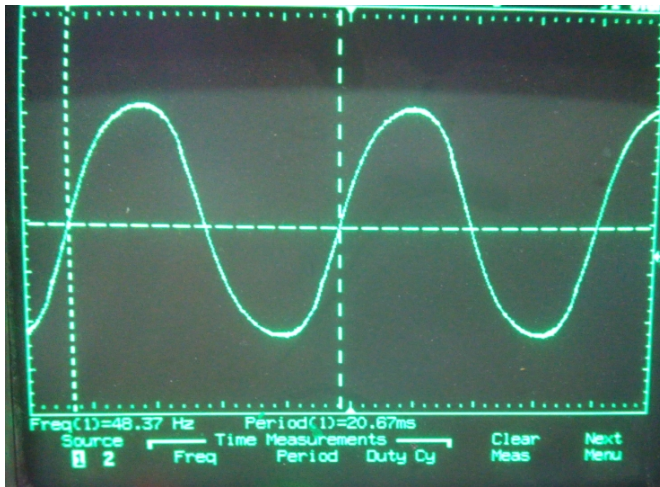


Fig. 10 (c) Output after filter in experimental  
Figure 10 the output voltage after filter results in (a) proteus, (b) Simulink, (c) experimental

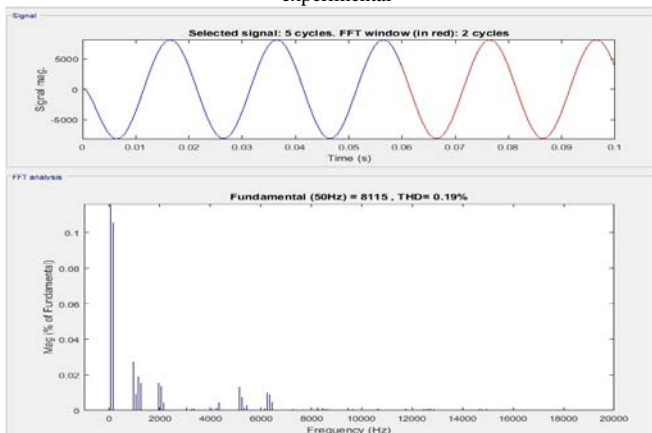


Figure 11 Total harmonic distortion of output wave form in Simulink

The generation of output voltage wave form of ideal inverters should be sinusoidal. The measured total harmonic distortion (THD) are very small THD=0.19% for output waveform as shown in figure 11 The output voltage waveforms show that the experimental results are very similar to simulation results. As expected, the higher the switching frequency, the smoother the output voltage waveform. The design parameters of the test device are shown in Table 1.

Elements	Parameters
MOSFETs IR3205	Rated 55V, 110A has ultra-low resistance 8 mΩ
Inverter filter	Capacitance: 1μF, 250 V Inductance: 12mH Resonant Frequencies: 500 Hz
TLP250	High level input voltage: 3.3 V High level input current: 5 mA maximum operating frequency: 25 kHz
Output Voltage	220-250 Volts (AC)
System Frequency	50-Hz

Table 1.Design parameters

## VIII. CONCLUSION

This paper describes the design and implementation of a digitally controlled single phase SPWM inverter to

develop the control circuit for a single phase inverter which has been implemented using PIC18f4431 microcontroller based control applications. These inverter topologies can be used for WECS applications and particular inverters for the AC-Module. The unipolar SPWM pulses are generated for fundamental frequency of 50 Hz and its switching frequency of 20 kHz are simulated in Proteus and Simulink simulator. The output voltage of inverter is changing by modulation index of the unipolar SPWM pulses according to the load condition which is given as the gate pulses to inverter switches. The experimental has been performed for output voltage of inverter for different values of loads. The simulation results which are performed at Simulink and Proteus software are compared to the experimental results to perform by the LAB-module.

## IX. REFERENCES

- [1] P. maurya "Control Strategies of Inverter Using Wind Energy Conversion System For Variable Speed Application", *international journal of collaborative research in engineering sciences*, vol. 1, pp. 1-6, Feb. 2014.
- [2] M.A.Ghalib, Y.S.Abdalla, R.M.Mostafa "Design and Implementation of A Pure Sine Wave Single Phase Inverter for Photo Voltaic Applications", [Online]. Available: <http://www.asee.org>.
- [3] P.H.Zope, P.G.Bhangale, P.Sonare, S.R.Suralkar "Design and Implementation of Carrier Based Sinusoidal PWM Inverter", *International journal of advanced research in electrical, electronics and instrumentation engineering*, vol 1, pp.230-236, Oct.2012.
- [4] M.S.Aspalli, A.Wamanrao "Sinusoidal Pulse Width Modulation (SPWM) with Variable Carrier Synchronization for Multilevel Inverter Controllers", *IEEE International conference*, pp.1-6, jun.2009.
- [5] R.Haider, R.Alam, N.B.Yousuf, K.M.Salim "Design and Construction of Single Phase Pure Sine Wave Inverter for Photovoltaic Application", *IEEE/OSA/IAPR International conference on informatics, Electronics & Vision*, pp.190-194, Feb. 2012.
- [6] B Ismil, S Taib, A Saad, M Isa, " Development of Control Circuit for Single Phase Inverter Using Atmel Microcontroller" *First International Conference PEC IEEE*, pp. 437-440, Nov. 2006.
- [7] S.M Islam, G.M.Sharif, "Microcontroller Based Sinusoidal PWM Inverter for Photovoltaic Application" *First International Conference development in renewable energy technology, IEEE*, pp. 1-4, Dec. 2009.
- [8] E.Koutroulis, K.Kalaitzakis "Design of a Maximum Power Tracking System for Wind Energy Conversion Applications", *IEEE transaction on industrial electronics*, vol. 53, pp. 486-494, Apr. 2006.
- [9] S.K.Singh, H.kumar, K.Singh, A.Patel "A Survey Study of Different Types of PWM Techniques Used In Induction Motor Drive", *International journal of engineering science & advanced technology, (IJESAT)*, vol. 4, Feb. 2014.
- [10] S.A.Barge, S.R.Jagtap "Harmonic Analysis of Sinusoidal Pulse Width Modulation", *International journal of advanced electrical and electronics engineering, (IJAEEE)*, vol. 2, pp.13-16, 2013.
- [11] A.F.Zaidi, R.Muhida, A.M. Zaidi, S.yaacob, N.H.Zaid, " Development of Microcontroller-Based Inverter Control Circuit for Residential Wind Generator Application" *Journal of Science and technology*, Vol 2, pp. 55-77, 2010.
- [12] N.I.Raju, M.S.Islam, A.A.Uddin "Sinusoidal PWM Generation Technique for Three Phase Voltage Source Inverter With Analog Circuit & Simulation of PWM Inverter for Standalone Load & Micro-grid system", *International journal of renewable energy research*, vol. 3, pp.647-658, 2013.
- [13] M.H.Rashid, *Power Electronics: Circuits, Devices, and Applications, 3rd Ed.*, Prentice Hall, 2004, p. 226.
- [14] S.Daher, J.Schmid, F.Antunes, "Current Demand of High Performance Inverters for Renewable Energy Systems" *Power Electronics and Applications, European Conference on*, pp. 1-10, Sept. 2007, IEEE.
- [15] Microchip PIC 18F4431 Datasheet [Online]. Available: [ww1.microchip.com](http://ww1.microchip.com).